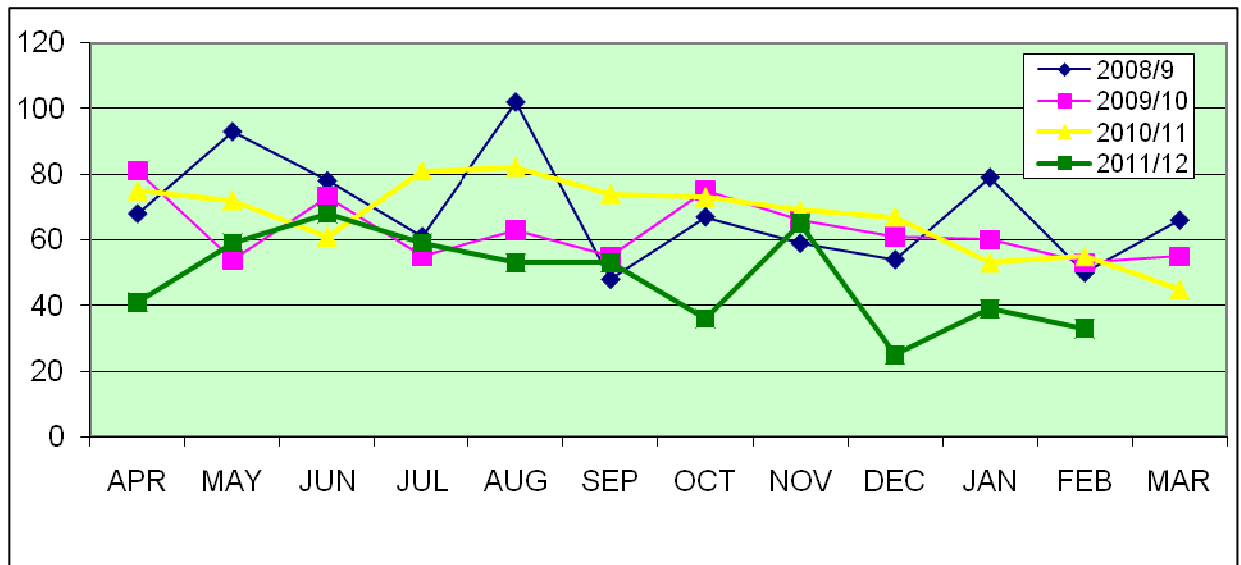


**Violent Crime Update for Cambridge City Violent Crime Task Group  
Period: January and February 2012**

**All Violent Crime in Market Ward<sup>1</sup>**

Month	2010	2011	Year on Year
November	70	65	-5
December	66	25	-41
<b>Total</b>	<b>136</b>	<b>90</b>	<b>-46</b>

Month	2011	2012	Year on Year
January	53	39	-14
February	55	33	-22
<b>Total</b>	<b>108</b>	<b>72</b>	<b>-36</b>



**All Violent Crime by Month for Market Ward<sup>2</sup>**

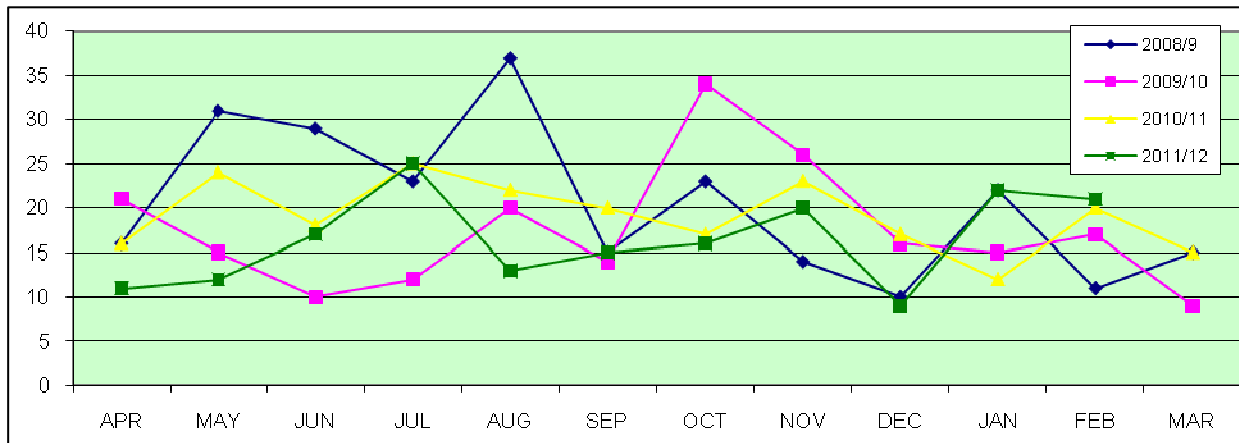
**Assaults with Less Serious Injury**

FYTD 2012 (CORA , up to 07/03/12)	Assaults with Less Serious Injury				
	Actual Crimes FYTD to 07/03/2012	Average No of Crimes per Day FYTD Mar 2012	Average No of Crimes per Day FYTD Mar 2011	Projected Crime to end of Mar 2012	Crimes FYTD to 07/03/2011
City Centre	229	1	1	245	315
Cambridge City	582	2	2	623	791

<sup>1</sup> Source: iBase based on the 'occurred from' date

<sup>2</sup> Source: iBase based on the 'occurred from' date

### Assault with Less Serious Injury in Market Ward<sup>3</sup>



#### Summary

- The level of violent crime significantly rose in January after falling so sharply in December to levels higher than previously recorded; however levels have slightly fallen in February.
- 63.9% (46/72) of offences are for assault comprising of 28 actual bodily harm, 3 assaulting a constable and 15 common assault
- 48.6% (35/72) of offences have been detected
- 63.9% (46/72) of offences occurred between 11pm and 04:30am

#### Offence Hotspots<sup>4</sup>

##### Streets (with five or more violent crimes in previous periods)

Streets		Nov – Dec 2010	Jan – Feb 2011	Mar – Apr 2011	May – Jun 2011	Jul – Aug 2011	Sept – Oct 2011	Nov – Dec 11	Jan – Feb 12
Sidney Street	<i>Crimes</i>	15	13	12	10	9	8	5	12
	<i>A&amp;E Assaults</i>	0	3	4	1	8	5	2	0
Regent Street	<i>Crimes</i>	5	11	6	5	10	11	7	6
	<i>A&amp;E Assaults</i>	1	1	3	3	3	4	3	2
St Andrews Street	<i>Crimes</i>	27	10	4	19	6	15	14	4
	<i>A&amp;E Assaults</i>	5	1	0	4	6	5	2	1
Downing Street	<i>Crimes</i>	6	10	4	4	6	5	2	7
	<i>A&amp;E Assaults</i>	1	0	0	0	0	0	0	1
Parkside (Including Parkers Piece)	<i>Crimes</i>	6	8	7	9	22	7	5	4
	<i>A&amp;E Assaults</i>	0	0	2	3	3	4	3	0
Lion Yard/ Grand Arcade	<i>Crimes</i>	6	3	1	2	5	4	4	3
	<i>A&amp;E Assaults</i>	0	0	0	0	1	2	1	0
Market Passage	<i>Crimes</i>	12	5	1	4	5	2	4	2
	<i>A&amp;E Assaults</i>	2	0	1	1	2	0	0	0

<sup>3</sup> Source: iBase based on the 'occurred from' date

<sup>4</sup> Source: iBase based on the 'occurred from' date and A&E assault data

NOT PROTECTIVELY MARKED

Market Hill	<i>Crimes</i>	12	3	1	8	4	0	3	2
	<i>A&amp;E Assaults</i>	6	0	0	0	0	0	2	0

**Hotspots streets for 2012 from A&E Assault Data**

Incident Location	Jan	Feb	Mar	Apr	May	Jun	Jul	Aug	Sept	Oct	Nov	Dec	Total
City Centre	1	2											3
Petty Cury	1	2											3
Regent Street	2	0											2

**Appendix 1:  
All Violent Crime in Market Ward by Offence Description**

Offence Description	Jan	Feb	Grand Total
ACTUAL BODILY HARM	15	13	28
ASSAULT ON CONSTABLE	2	1	3
COMMON ASSAULT	7	8	15
POSSESSION OF ARTICLE WITH BLADE OR POINT		1	1
PUBLIC FEAR, ALARM OR DISTRESS	10	6	16
RACIALLY OR RELIGIOUSLY AGGRAVATED PUBLIC FEAR, ALARM OR DISTRESS	1		1
ROBBERY OF PERSONAL PROPERTY	1	2	3
SEXUAL ASSAULT ON A FEMALE AGED 13 AND OVER		1	1
WOUNDING OR CARRYING OUT AN ACT ENDANGERING LIFE	3	1	4
<b>Grand Total</b>	<b>39</b>	<b>33</b>	<b>72</b>

**Appendix 2:  
Breakdown of Offences in Market Ward by Home Office Sub Group Description**

Year	Month	ROBBERY	SEXUAL OFFENCES	VIOLENCE AGAINST THE PERSON	Total
2008	Apr	5	4	59	68
	May	1	1	91	93
	Jun	1	2	75	78
	Jul	5	1	55	61
	Aug	12	2	88	102
	Sep	4	0	44	48
	Oct	4	0	63	67
	Nov	4	2	53	59
	Dec	4	4	46	54

NOT PROTECTIVELY MARKED

2009	Jan	5	4	70	79
	Feb	9	4	37	50
	Mar	5	3	58	66
	Apr	11	2	68	81
	May	3	3	48	54
	Jun	7	2	64	73
	Jul	2	1	52	55
	Aug	1	1	61	63
	Sep	1	1	53	55
	Oct	4	0	71	75
	Nov	1	1	64	66
	Dec	4	1	56	61
2010	Jan	2	2	55	59
	Feb	1	2	50	53
	Mar	1	0	54	55
	Apr	10	1	64	75
	May	1	1	71	73
	Jun	4	1	55	60
	Jul	2	3	75	80
	Aug	7	2	73	82
	Sep	5	3	66	74
	Oct	4	2	62	68
	Nov	7	2	60	69
	Dec	3	0	64	67
2011	Jan	2	2	49	53
	Feb	3	3	49	55
	Mar	1	2	42	45
	Apr	2	1	36	39
	May	0	2	57	59
	Jun	0	4	64	68
	Jul	1	2	56	59
	Aug	2	1	50	53
	Sep	0	1	52	53
	Oct	0	2	34	36
	Nov	1	2	63	66
	Dec	0	1	25	26
2012	Jan	1	0	38	39
	Feb	2	1	30	33
	Ma				
	April				
	May				
	June				
	July				
	Aug				
	Sept				
	Oct				
	Nov				
	Dec				

## What are 'Assaults with Less Serious Injury'?

The category of 'Assaults with Less Serious Injury' is made up of two Home Office Classifications:

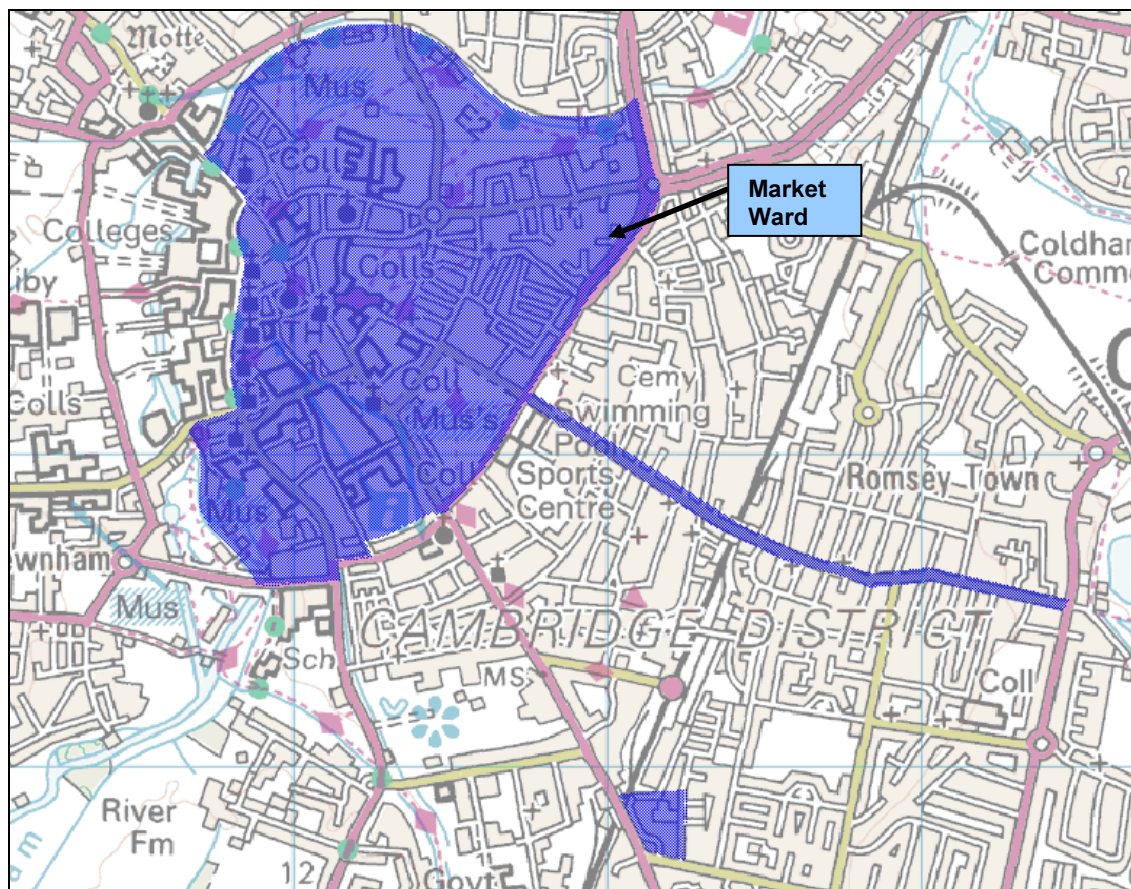
Actual Bodily Harm and Other Injury (code 8G)

Racially or Religiously Aggravated Actual Bodily Harm and Other Injury (code 8J)

These two Home Office classifications consist of the following Offences<sup>5</sup>:

Offence Description	HO Code
Malicious Wounding	8/1
Drivers Injuring Persons by Furious Driving	8/4
Assault of Person Preserving a Wreck	8/5
Assault Occasioning Actual Bodily Harm	8/6
Assault with Intent to Resist Apprehension	8/20
Owner or Person in Charge Allowing Dog to be Dangerously out of control in a Public Place Injuring any Person	8/21
Owner of Person in Charge Allowing Dog to Enter a Non-Public Place and Injure any Person	8/22
Racially or Religiously Aggravated Actual Bodily Harm	8/34, 8/41, 8/47
Racially or Religiously Aggravated Malicious Wounding	8/33, 8/40, 8/46

## Appendix 4: Map showing Market Ward



<sup>5</sup> Source: Home Office Counting Rules for Recorded Crime